

Family-friendly programming of:

Exploring Human Origins

A traveling Smithsonian exhibit & community learning opportunity

Fletcher Free Library, 235 College Street, Burlington

PrehiStories with Megan

Storytime with books, songs & rhymes.

- Sunday, February 26, 1:00 p.m.
- Monday, February 27, 11:00 a.m.
- Sunday, March 12, 1:00 p.m.

Recommended for ages 2-5.

Crafts

Cave Art—Saturday, March 4 at 2pm
Create and shape animal figurine as early humans may have 35,000 years ago ... using surprise playdough!

Recommended for ages 3 & up.

Showtime

Film Series: The Adventures of Pinocchio
March 4 at 3pm— Fletcher Room

A magical story of a wooden puppet who becomes a real boy. What do you think it means to be human?

Children of all ages.

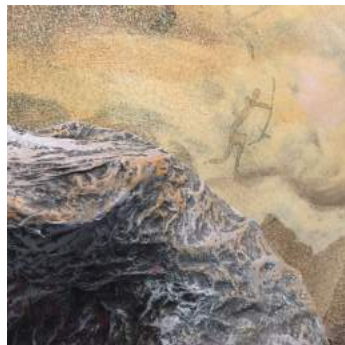
7th Annual Seed Swap

The “Seed Starting Station” is in a CAVE this year! March 11 at 12:00-3:00 p.m.

Wait ... a cave in the Library? Come & see(d) for yourself.

Children of all ages.

COME AND EXPLORE OUR CAVE!



Family-friendly programming of:

Exploring Human Origins

A traveling Smithsonian exhibit & community learning opportunity

Youth Area of Fletcher Free Library

Activity tables

Fossil Dig: You can be a paleontologist!

Children encouraged search for fossils.

Prehistoric Cave Art: Create a cave drawing
Children encouraged to draw their own “Cave” drawings.

Scavenger Hunt: Library Skull Search

Children encouraged to use a clue sheet to find pictures of skulls of human ancestors in the Children’s Library.

Bulletin Board

“What if You Were a Prehistoric Human?”

Images and questions about survival on new print background. Where would you live? How would you stay warm? What would you eat? How would you stay safe from animals?” Children encouraged to write answers directly on newsprint on bulletin board.



**THE LIBRARY’S
CAVE AWAITS
YOU!**